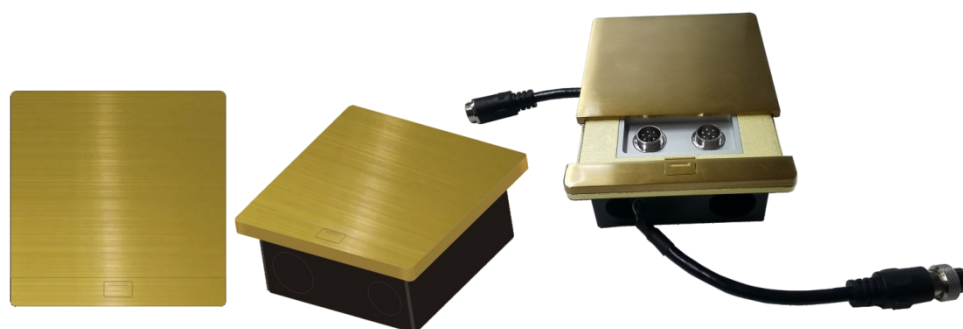




Socket

TS-6F-RL



## Feature:

- \* Support network interface extension function.
- \* One in and three out, connect the unit and the controller, realize the network function.
- \* Adopt 100M/10M adaptive network transmission, realize hand-in-hand cascade.
- \* Each six-pin aviation connector supports IEEE802.3, IEEE802.3u, IEEE802.3x standards, and has strong anti-interference ability.
- \* The bottom box is waterproof.

## Specifications:

Model	TS-6F-RL
Total power consumption	1.5W
Network port standard	IEEE802.3, IEEE802.3u, IEEE802.3x
Power supply	Six-pin port power supply
Color	Gold
Bottom box size	100×100×45mm (L×W×H)
Panel size	124×120×7.6mm (L×W×H)
Weight	About 0.6kg
Installation method	Floor embedded
Working temperature	-10℃~+45℃
Working humidity	20%~80% relative humidity, no condensation