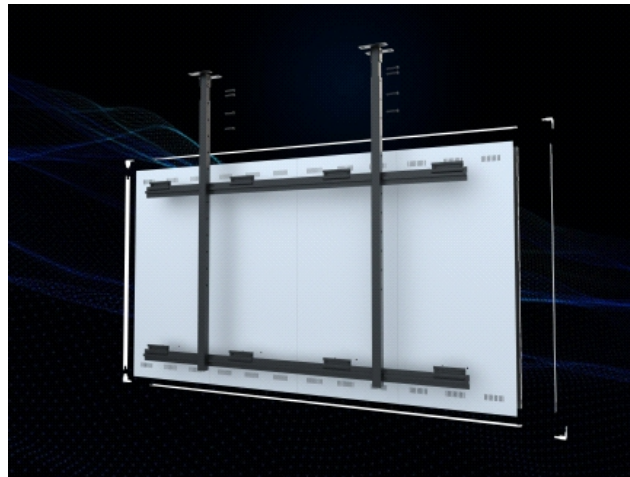




## All-in-one ceiling bracket

TV-DZ001



### Description

The ceiling mount bracket is designed for modern commercial displays, conference rooms, teaching venues and high-end home theaters. It is a professional ceiling mount bracket system that combines innovative technology and aesthetic design. This product uses high-quality aviation-grade aluminum alloy + solid steel materials, combined with precise CNC processing technology to create a light and solid structure, which not only ensures excellent load-bearing capacity, but also takes into account beauty and durability.

### Specification

\*Designed specifically for large-size all-in-one machines, compatible with 110-inch/138-inch/165-inch LED all-in-one machines of various specifications, eliminating installation and use problems caused by size deviation, achieving precise adaptation, and ensuring the best user experience.

\*The main body is designed with composite materials, and the main body is made of high-strength aluminum alloy, which is strong and lightweight; the hanger part is made of high-strength steel to ensure structural stability; the back panel is made of aluminum plate, and the surface is treated with black matte and silver matte paint, with extraordinary texture, both beautiful and durable.

\*It provides a super-large height adjustment stroke of 0-1000mm, and adopts screw locking adjustment method. It is easy to operate, stable and reliable. The screen height can be flexibly adjusted according to the actual use scenario to meet the needs of different users.

\*It has excellent load-bearing capacity, with a load-bearing capacity of <160kg (110 inches), <226kg (138 inches), and <327kg (165 inches), which can stably support large-screen equipment.

\*The front appearance adopts black matte paint technology, which has extraordinary texture, highlights high-end quality, and improves corrosion resistance and wear resistance. It still maintains a bright appearance after long-term use.

\*Two sizes of packaging are used for combined transportation to ensure full protection of the bracket during transportation, reduce the risk of damage, and facilitate handling and storage.

\*Working temperature range: -20℃~+60℃.

\*Storage temperature range: -25℃~125℃.

\*Working humidity range: 10%~75%RH.

\*Storage humidity range: 10%~75%RH.

\*Net weight of the whole machine: ≤60kg (110 inches), ≤76kg (138 inches), ≤112kg (165 inches).

\*Product size (L\*W\*H): 2030\*60\*1781mm (110 inches), 2640\*60\*2124mm (138 inches), 3250\*60\*2462mm (165 inches).