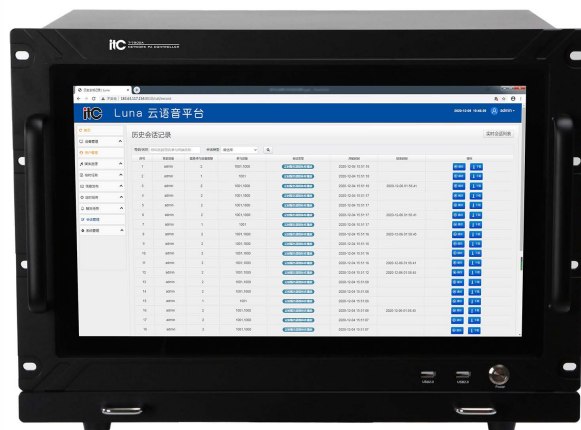


# itc IP Network controller

## T-7800A



### Description:

The IP network controller is the operating carrier of the IP PA system server software. Working with the Luna cloud-based PA system software, it acts as the control center of the PA system. Installed in the main control room, it conducts real-time and effective management of the entire PA system.

### Features:

- \* The industrial-grade IPC cabinet adopts a steel structure, which is highly anti-magnetic, dust-proof and shock-proof.
- \* 17.3-inch LED LCD display, built-in 10-point capacitive touch screen, user-friendly operation.
- \* Industrial-grade dedicated motherboard design, 4 cores, 8 threads, 3.4GHz CPU, 8G memory as standard.
- \* Built-in large-capacity 1TB enterprise-level HDD hard disk, read and write speed reaches 600MB/S, without any movable mechanical parts, with super durability and reliability.
- \* Built-in large-capacity 256G mSATA hard disk, speed of reading and writing up to 600MB/S, no movable mechanical parts, super durability and reliability.
- \* It has 8 USB ports and 6 universal serial ports, convenient for the access of external peripheral equipment.
- \* Support 2 channels of sound cards, receive external audio signals and collect them to the server program channel, which will be uniformly played by the server to the front-end network audio terminals. Support dual graphics cards and can be connected to the largest FullHD display device.
- \* Support automatic start-up after turning on the power, scheduled power-on/off of the operating system; support the automatic power-on function triggered by external devices. It is convenient for the flexible operation and management of the project, and reduces unnecessary power loss.
- \* Linux system works as the core operating platform, providing strong openness, easy extension and upgrade, powerful network support, high security, and strong compatibility.
- \* Unified management of all audio terminals in the system, including paging microphones, intercom terminals, broadcasting terminals and fire alarm interface devices.
- \* It can manage a maximum of 300 terminal devices and support a maximum of 150 groups of differentiated real-time tasks.
- \* The system has a robust backup mechanism that allows for switching when the main server fails.
- \* Standard dual network interface, support switching of extension mode and redundant backup mode, full connection rate up to 1000M, support cross network band and cross router mode.
- \* Support primary and spare server mode, and the spare server as a hosting application, support NTP (time synchronization) server calibrating time with GPS.
- \* Support distributed deployment of multiple servers and server cluster architecture.

### Specifications:

Model	T-7800A
Screen size	17.3 inches
Screen color	24-bit full color
Display screen	17.3-inch high-resolution LED LCD screen (1920*1080)
Control method	10-point capacitive touch screen
Screen ratio	16:9
Working temperature	-10°C~50°C
Storage temperature	-20°C~60°C
Relative humidity	10%~95%, no condensation
Standard interface	With 1×PS/2 interface, 6×serial ports, 1×VGA interface, 1×HDMI interface, 8×USB interfaces, 2×Gigabit Ethernet ports, 1×Audio interface, 1×DVI interface
Hard disk	Supports 3.5", 2.5", mSATA hard disks; Standard configuration: 1×1TB enterprise-level HDD
RAM	standard configuration: 8G/DDR
Network card	Intel dual gigabit network interface network card
CPU	4 cores 8 threads 3.4GHz
System audio signal SNR	LINE: 70dB; MIC: 60dB
System audio signal distortion	1KHz<0.5%
System audio signal standard input level	LINE: 300mV; MIC: 5mV
System audio signal standard output level	0dBV
Power supply	Input voltage: AC100V-240V
Software operating platform	ubuntu
Size(mm)	484×339.5×353.5mm
Weight	18.4kg