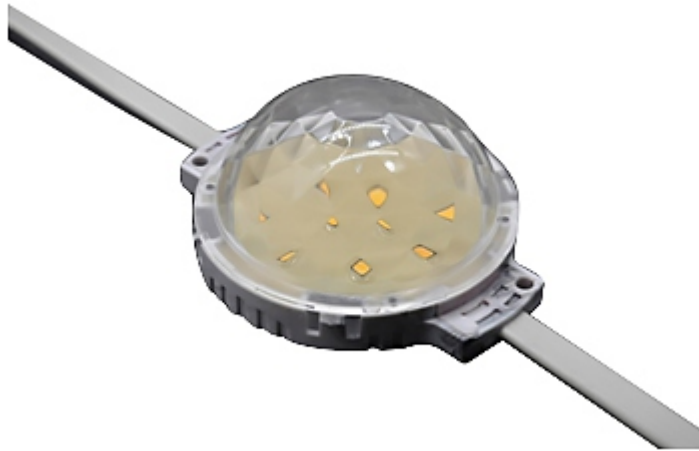




LED Point Light

TL-LH4501



Description

It is a new bright decorative LED light. Built-in LED cold light source, it can emit different colors as needed. It can be programmed to control multiple synchronous changes at random, enabling the full-color change effects such as synchronous colorful, jumping, scanning, and running water. It can also form a lattice screen with multi-point light sources and change various pictures, characters, animation effects, etc.

Features

*Original appearance design, simple overall appearance, angular, exquisite and beautiful, structural waterproof design, waterproof grade IP65;

*High grayscale, high refresh, flicker-free and color design;

*Uniform and soft luminescence, no dark areas.

* Built-in constant current driving circuit, allowing it to maintain efficient illumination. It operates stably over a wide voltage range, improving surge protection capability and avoiding flickering of the lights caused by changes in the external power supply voltage. During the process of connecting the lights in series, it ensures consistent brightness between the first and last light fixtures.

Specifications

Input voltage/power	DC24V/3W
Light source	EPISTAR
Beam angle	120°
Color temperature	3000K (1900K, 2100K, 4000K, 5700K optional)
Light effect	≥80lm/W
Color rendering index	Ra≥80
Color tolerance	SDCM≤5
Light source life	50000H
Control mode	ON/OFF
IK level	IK08
IP level	IP65
Shell material	PC+ transparent honeycomb cover
Appearance color	sand gray
Installation method	Buckle/cable/profile
Product size	D80mm
Net weight	0.6kg
Remark	1M/6PCS